

# Industrial Robot

## KE Series

### 6.1 Features

- Compact and lightweight
- Easy system installation and maintenance.
- MG is made of stainless steel for anti-corrosion purpose.
- Closed design.
- High accuracy, High efficiency, High reliability

### 6.2 Applications

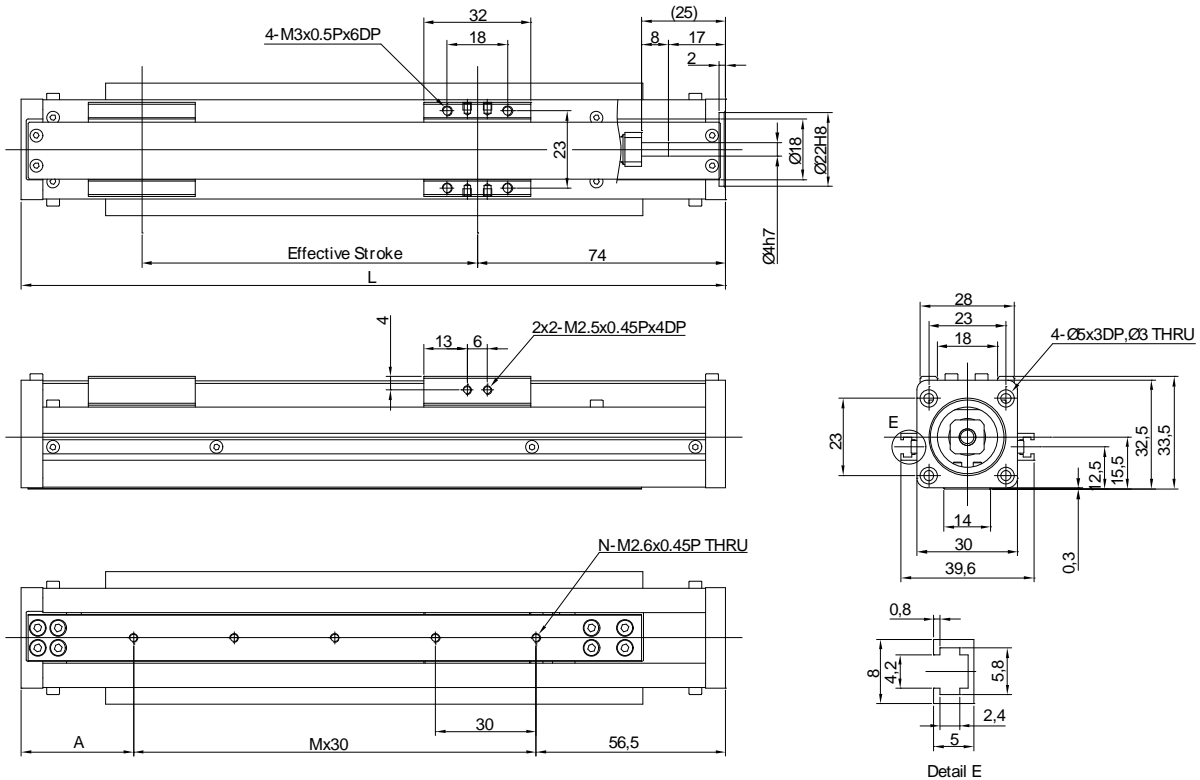
- Precision Industry & Semiconductor
- Inspection & Testing & Assembly equipment
- Optical & Medical high positional equipment



## 6.3 KE Series

### Model Number for KE30

KE030	-1.25	C	-300	A	F0	S1	M
Model	Lead	Precision Grade	Effective Stroke	Slider Type	Motor Flange	Limit Switch	Motor
	1.25 mm	C: Normal P: Precision		A: Standard	F0: Direct	S1:OMRON SX671 S2:OMRON SX674 S3:SUNX GX-F12A S4:SUNX GX-F12A-P None: Without Sensor	M: Supplied With Motor None: Without Motor



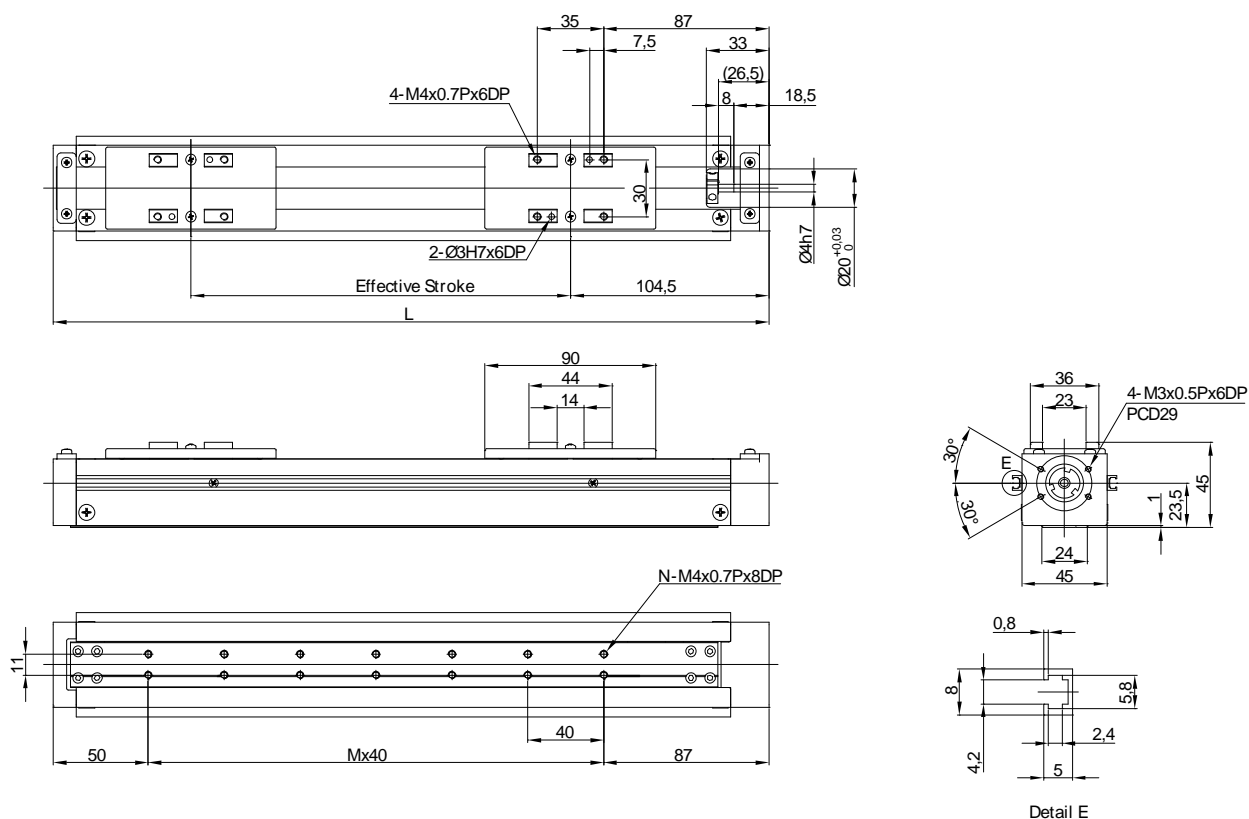
Effective stroke (mm)	L	A	M	N	Weight (kg)	AC motor output	W	28 stepping motor	
50	160	43.5	2	3	0.2	Rated RPM	RPM	-	
100	210	33.5	4	5	0.5	Lead	mm	1.25	
150	260	23.5	6	7	0.8	Max linear speed	mm/sec	62.5	
200	310	43.5	7	8	1.1	Rated thrust	N	175	
250	360	33.5	9	10	1.4	Repeatability	mm	±0.02	
300	410	53.5	10	11	1.9	Effective stroke	mm	50-300	
						Max load (H)	kg	4	
							Fyd	N	4
					Fzd		N	40	
					Mxd		N-m	0.1	
					Myd		N-m	0.1	
					Mzd		N-m	0.1	
						Permitted load condition**	$\frac{F_y}{F_{yd}} + \frac{F_z}{F_{zd}} + \frac{M_x}{M_{xd}} + \frac{M_y}{M_{yd}} + \frac{M_z}{M_{zd}} \leq 1$ Fy, Fz, Mx, My, Mz Mz are working loads		

\* The load condition is based on 10,000km operation.

\*\* If used on the vertical axis or in a special condition, please contact HIWIN.

## Model Number for KE40

KE040	-10	C	-300	A	F0	S1	M
Model	Lead	Precision Grade	Effective Stroke	Slider Type	Motor Flange	Limit Switch	Motor
	2 mm 5 mm	C: Normal  P: Precision		A: Standard	F0 : Direct	S1:OMRON SX671 S2:OMRON SX674 S3:SUNX GX-F12A S4:SUNX GX-F12A-P None: Without Sensor	M: Supplied With Motor None: Without Motor



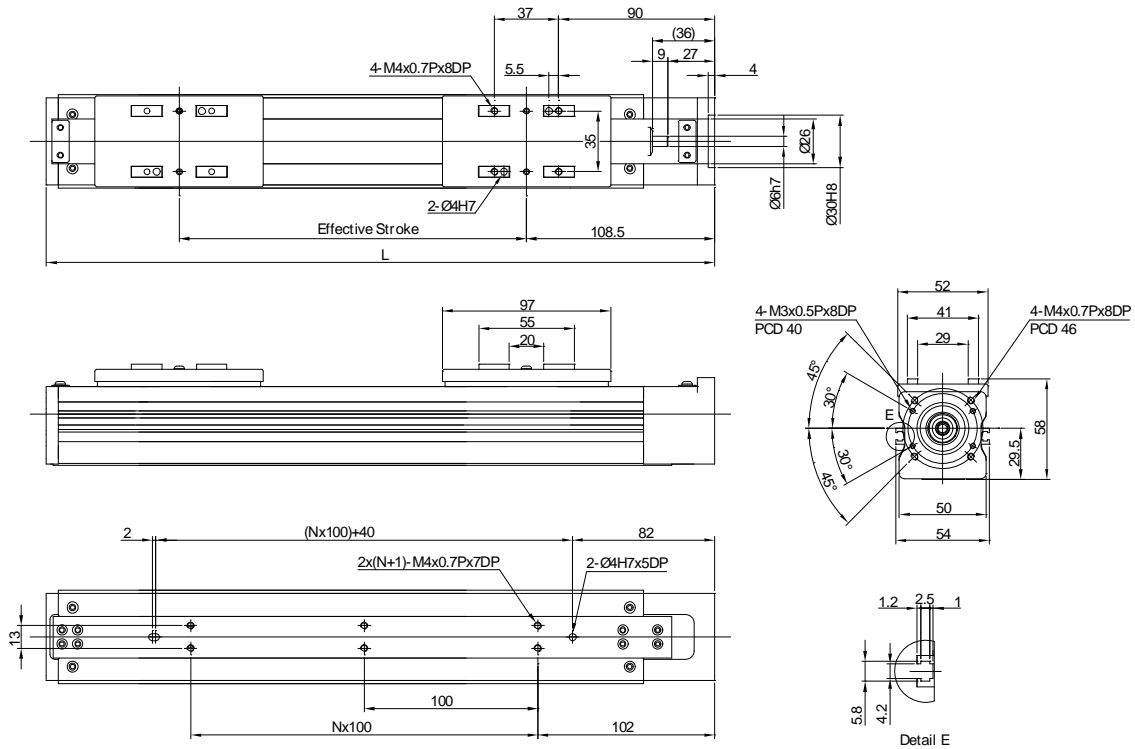
Effective stroke (mm)	L	A	M	N	Weight (kg)	AC motor output	W	50
50	227	60	2	6	1	Rated RPM	RPM	3000 3000
100	277	70	3	8	1.3	Lead	mm	2 5
150	327	40	5	12	1.6	Max linear speed	mm/sec	100 250
200	377	50	6	14	1.9	Rated thrust	N	280 140
250	427	60	7	16	2.2	Repeatability	mm	±0.02
300	477	70	8	18	2.5	Effective stroke	mm	50~300
						Max load (H)	kg	8 6
							Fyd	N 6 6
					Fzd		N 80 60	
					Mxd		N-m 1 1.1	
					Myd		N-m 0.5 0.6	
					Mzd		N-m 0.5 0.5	
					Permitted load condition**	$\frac{F_y}{F_{yd}} + \frac{F_z}{F_{zd}} + \frac{M_x}{M_{xd}} + \frac{M_y}{M_{yd}} + \frac{M_z}{M_{zd}} \leq 1$ Fy, Fz, Mx, My, Mz Mz are working loads		

\* The load condition is based on 10,000km operation.

\*\* If used on the vertical axis or in a special condition, please contact HIWIN.

## Model Number for KE50 (Single Slider)

<b>KE050</b>	<b>-04</b>	<b>C</b>	<b>-400</b>	<b>A</b>	<b>F0</b>	<b>S2</b>	<b>M</b>
Model	Lead	Precision Grade	Effective Stroke	Slider Type	Motor Flange	Limit Switch	Motor
	4 mm	C: Normal		A: Standard	F0:Direct	S2: OMRON SX674 None: Without Sensor	M: Supplied With Motor None: Without Motor



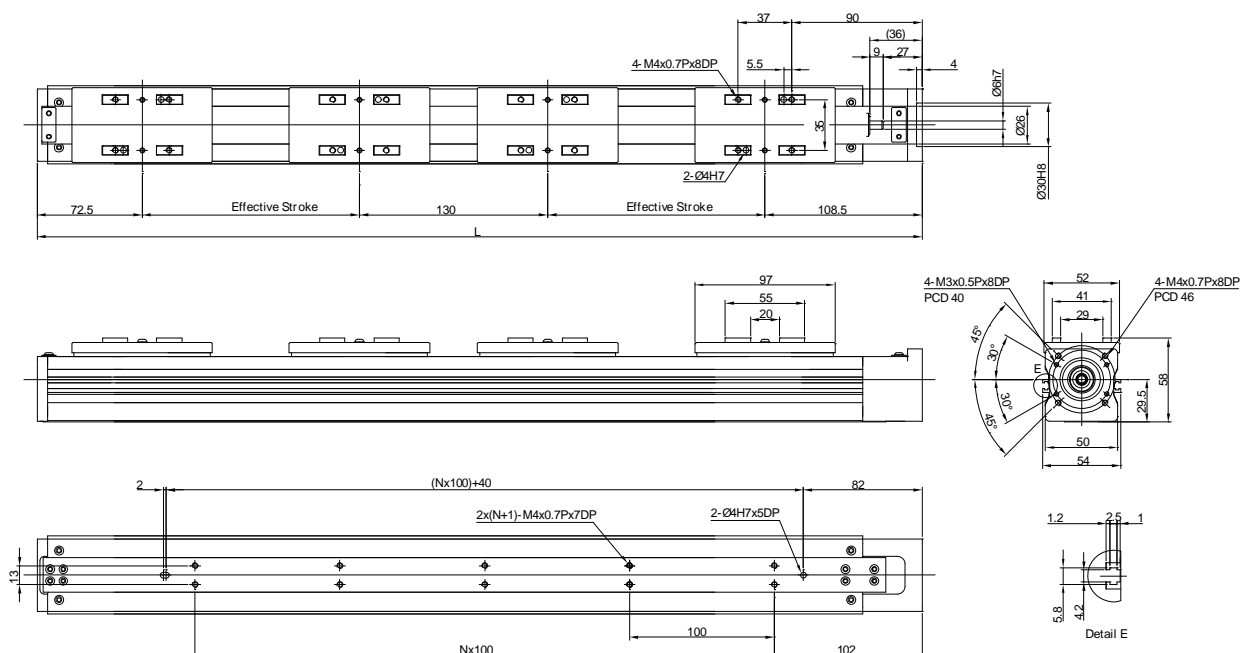
Effective stroke (mm)	L	N	Weight (kg)	AC motor output	W	100	
				Rated RPM	RPM	3000	
100	285	1	1.4	Lead	mm	4	
200	385	2	1.7	Max linear speed	mm/sec	200	
300	485	3	2	Rated thrust	N	175	
400	585	4	2.3	Repeatability	mm	±0.02	
				Effective stroke	mm	100-400	
				Max load (H)	kg	10	
Rated dynamic load*					Fyd	N	6
					Fzd	N	100
					Mxd	N-m	1.7
					Myd	N-m	0.8
					Mzd	N-m	0.8
Permitted load condition**				$\frac{F_y}{F_{yd}} + \frac{F_z}{F_{zd}} + \frac{M_x}{M_{xd}} + \frac{M_y}{M_{yd}} + \frac{M_z}{M_{zd}} \leq 1$ <p>F<sub>y</sub>, F<sub>z</sub>, M<sub>x</sub>, M<sub>y</sub>, M<sub>z</sub> are working loads</p>			

\* The load condition is based on 10,000km operation.

\*\* If used on the vertical axis or in a special condition, please contact HIWIN.

## Model Number for KE50 (Double Slider)

<b>KE050</b>	<b>D</b>	<b>-04</b>	<b>C</b>	<b>-250</b>	<b>A</b>	<b>F0</b>	<b>S2</b>	<b>M</b>
Model	Double Slider	Lead	Precision Grade	Effective Stroke	Slider Type	Motor Flange	Limit Switch	Motor
		4mm	C: Normal		A: Standard	F0 :Direct	S2: OMRON SX674 None: Without Sensor	M: Supplied With Motor None: Without Motor



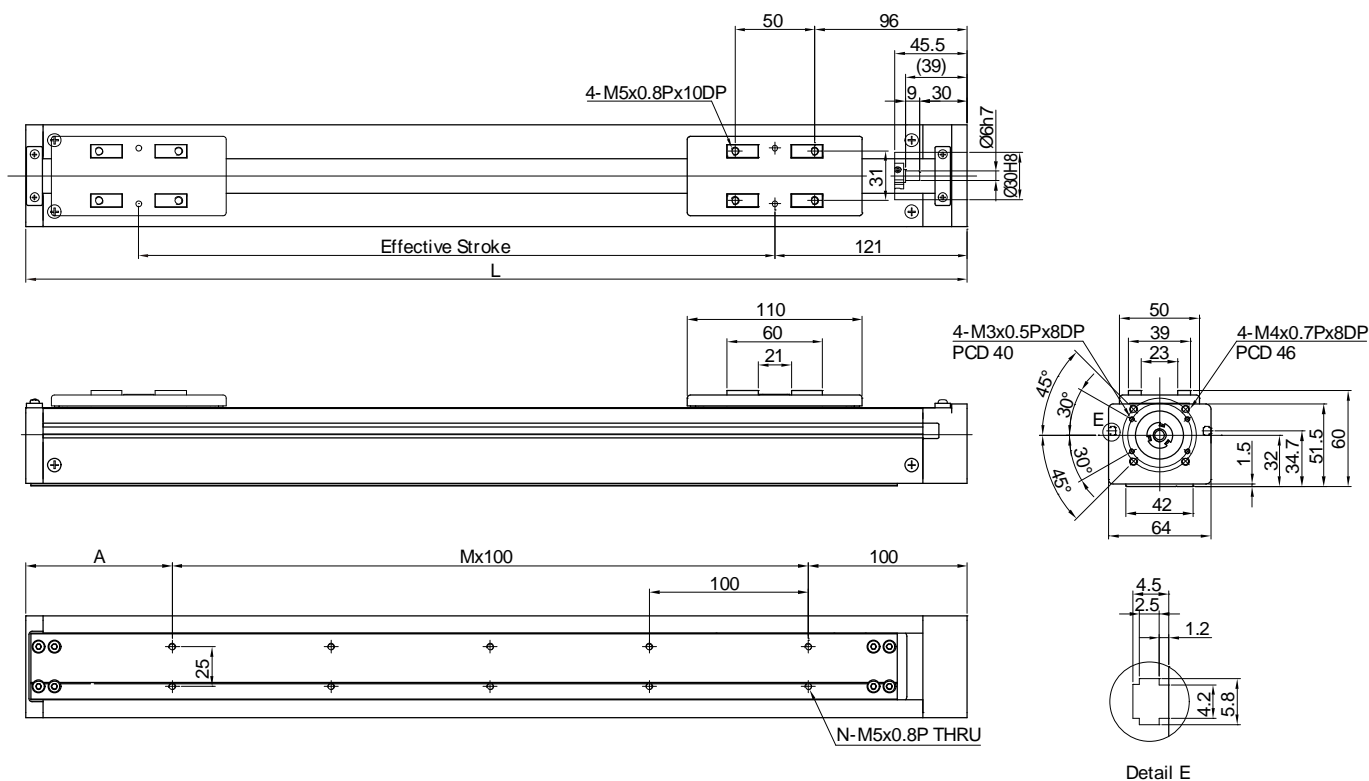
Effective stroke (mm)	L	N	Weight (kg)	AC motor output	W	100	
				Rated RPM	RPM	3000	
100	511	3	2.3	Lead	mm	4	
150	611	4	2.5	Max linear speed	mm/sec	200	
200	711	5	2.8	Rated thrust	N	175	
250	811	6	3.0	Repeatability	mm	±0.02	
				Effective stroke	mm	100~400	
				Max load (H)	kg	10	
Rated dynamic load*					Fyd	N	6
					Fzd	N	100
					Mxd	N-m	1.7
					Myd	N-m	0.8
					Mzd	N-m	0.8
Permitted load condition**				$\frac{F_y}{F_{yd}} + \frac{F_z}{F_{zd}} + \frac{M_x}{M_{xd}} + \frac{M_y}{M_{yd}} + \frac{M_z}{M_{zd}} \leq 1$ <p>Fy, Fz, Mx, My, Mz are working loads</p>			

\* The load condition is based on 10,000km operation.

\*\* If used on the vertical axis or in a special condition, please contact HIWIN.

## Model Number for KE65

KE065	-10	C	-600	A	F0	S1	M
Model	Lead	Accuracy Grade	Effective Stroke	Slider Type	Flange F0	Limit Switch	Motor
	5 mm 10 mm	C: Normal P: Precision		A: Standard	F0: 100W	S1: OMRON SX671 S2: OMRON SX674 S3: SUNX GX-F12A S4: SUNX GX-F12A-P None: Without Sensor	M: Supplied With Motor None: Without Motor



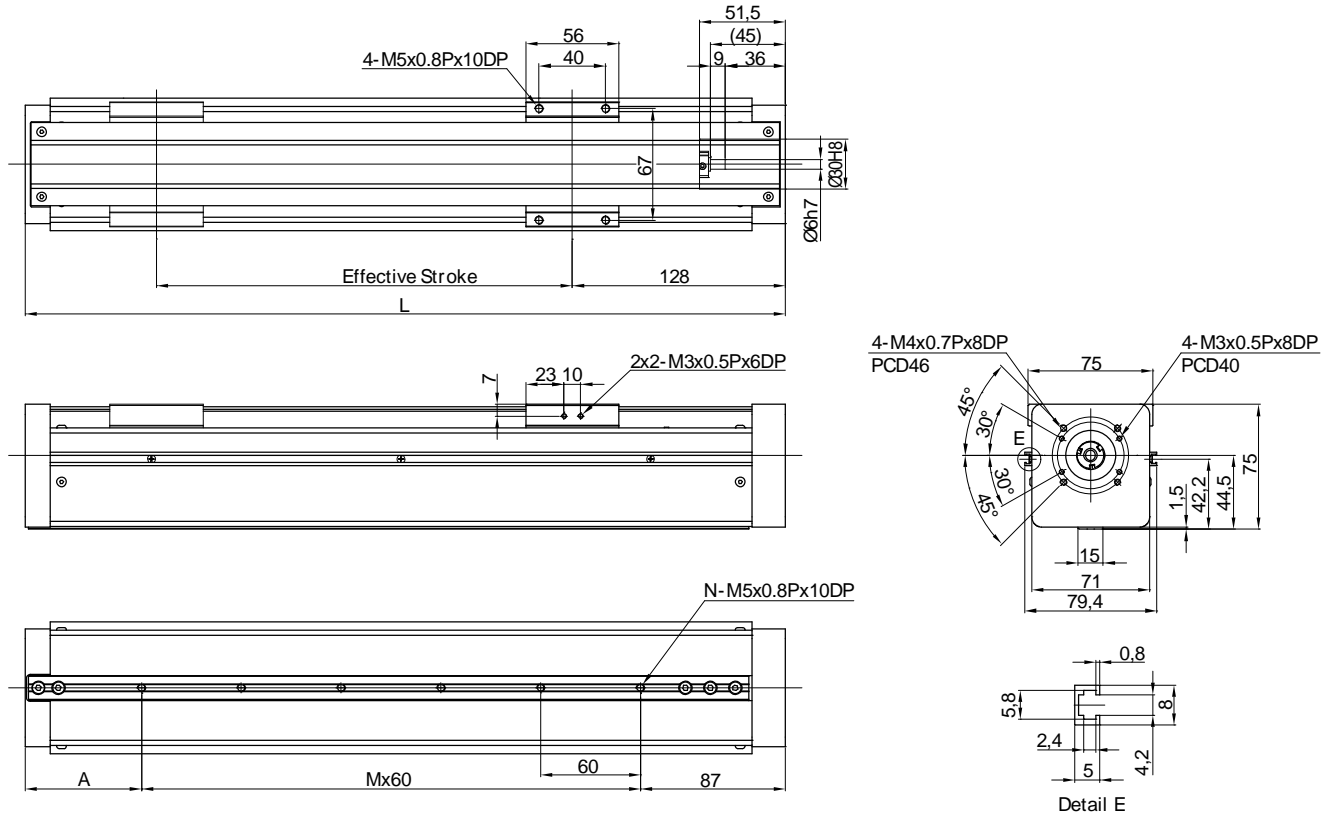
Effective stroke (mm)	L	A	M	N	Weight (kg)	AC motor output	W	100	
50	242	42	1	4	2.5	Rated RPM	RPM	3000 3000	
100	292	92	1	4	2.8	Lead	mm	5 10	
150	342	42	2	6	3.1	Max linear speed	mm/sec	250 500	
200	392	92	2	6	3.4	Rated thrust	N	280 140	
250	442	42	3	8	3.7	Repeatability	mm	±0.02	
300	492	92	3	8	4	Effective stroke	mm	50-600	
350	542	42	4	10	4.3	Max load (H)	kg	15 13	
400	592	92	4	10	4.6	Rated dynamic load* 	Fyd	N	6 6
450	642	42	5	12	4.9		Fzd	N	150 130
500	692	92	5	12	5.2		Mxd	N-m	4.4 4.5
550	742	42	6	14	5.5		Myd	N-m	2.3 2.4
600	792	92	6	14	5.8		Mzd	N-m	2.3 2.4
Permitted load condition**						$\frac{F_y}{F_{yd}} + \frac{F_z}{F_{zd}} + \frac{M_x}{M_{xd}} + \frac{M_y}{M_{yd}} + \frac{M_z}{M_{zd}} \leq 1$ Fy, Fz, Mx, My, Mz are working loads			

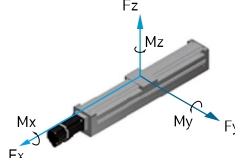
\*The load condition is based on 10,000km operation

\*\*If used on vertical axis or special condition, please contact HIWIN.

## Model Number for KE70

KE070	-10	C	-600	A	F0	S1	M
Model	Lead	Accuracy Grade	Effective Stroke	Slider Type	Flange F0	Limit Switch	Motor
	5 mm 10 mm	C: Normal P: Precision		A: Standard	F0: Direct	S1: OMRON SX671 S2: OMRON SX674 S3: SUNX GX-F12A S4: SUNX GX-F12A-P None: Without Sensor	M: Supplied With Motor None: Without Motor



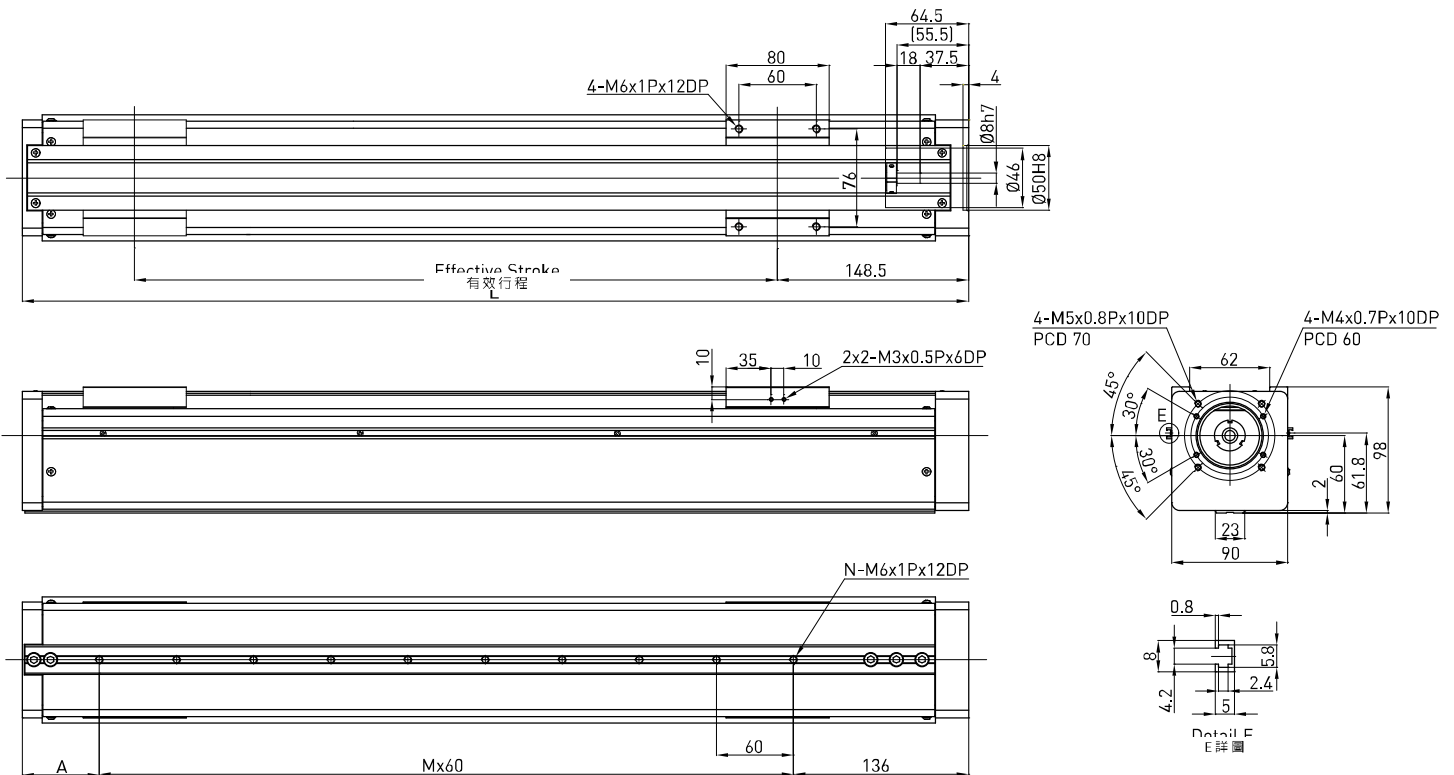
Effective stroke (mm)	L	A	M	N	Weight (kg)	AC motor output	W	100																			
50	257	50	2	3	2.8	Rated RPM	RPM	3000 3000																			
100	307	40	3	4	3.1	Lead	mm	5 10																			
150	357	90	3	4	3.4	Max linear speed	mm/sec	250 500																			
200	407	80	4	5	3.7	Rated thrust	N	280 140																			
250	457	70	5	6	4	Repeatability	mm	±0.02																			
300	507	60	6	7	4.3	Effective stroke	mm	50-600																			
350	557	50	7	8	4.6	Max load (H)	kg	20 18																			
400	607	40	8	9	4.9	<div style="display: flex; align-items: center;">  <table border="1" style="margin-left: 10px;"> <tr> <td>Fyd</td> <td>N</td> <td>6</td> <td>6</td> </tr> <tr> <td>Fzd</td> <td>N</td> <td>200</td> <td>180</td> </tr> <tr> <td>Mxd</td> <td>N-m</td> <td>4.5</td> <td>4.5</td> </tr> <tr> <td>Myd</td> <td>N-m</td> <td>1.8</td> <td>1.8</td> </tr> <tr> <td>Mzd</td> <td>N-m</td> <td>1.6</td> <td>1.6</td> </tr> </table> </div>	Fyd	N	6	6	Fzd	N	200	180	Mxd	N-m	4.5	4.5	Myd	N-m	1.8	1.8	Mzd	N-m	1.6	1.6	
Fyd	N	6	6																								
Fzd	N	200	180																								
Mxd	N-m	4.5	4.5																								
Myd	N-m	1.8	1.8																								
Mzd	N-m	1.6	1.6																								
450	657	90	8	9	5.2	$\frac{F_y}{F_{yd}} + \frac{F_z}{F_{zd}} + \frac{M_x}{M_{xd}} + \frac{M_y}{M_{yd}} + \frac{M_z}{M_{zd}} \leq 1$ <p>Fy, Fz, Mx, My, Mz Mz are working loads</p>																					
500	707	80	9	10	5.5																						
550	757	70	10	11	5.8																						
600	807	60	11	12	6.1																						
							Permitted load condition**																				

\*The load condition is based on 10,000km operation

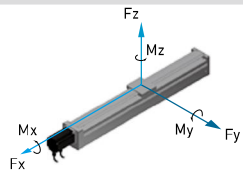
\*\*If used on vertical axis or special condition, please contact HIWIN.

## Model Number for KE90

KE090	-10	C	-600	A	F0	S1	M
Model	Lead	Accuracy Grade	Effective Stroke	Slider Type	Flange F0	Limit Switch	Motor
	5 mm 10 mm	C: Normal P: Precision		A: Standard	F0: Direct	S1: OMRON SX671 S2: OMRON SX674 S3: SUNX GX-F12A S4: SUNX GX-F12A-P None: Without Sensor	M: Supplied With Motor None: Without Motor



Effective stroke (mm)	L	A	M	N	Weight (kg)	AC motor output	W	100	
50	286	90	1	2	6.7	Rated RPM	RPM	3000 3000	
100	336	80	2	3	7	Lead	mm	5 10	
150	386	70	3	4	7.3	Max linear speed	mm/sec	250 500	
200	436	60	4	5	7.6	Rated thrust	N	280 140	
250	486	50	5	6	7.9	Repeatability	mm	±0.02	
300	536	40	6	7	8.2	Effective stroke	mm	50-600	
350	586	90	6	7	8.5	Max load (H)	kg	25 23	
400	636	80	7	8	8.8	Rated dynamic load*	F <sub>yd</sub>	N 6 6	
450	686	70	8	9	9.1		F <sub>zd</sub>	N 250 230	
500	736	60	9	10	9.4		M <sub>xd</sub>	N-m 13 12	
550	786	50	10	11	9.7		M <sub>yd</sub>	N-m 7.1 7	
600	836	40	11	12	10		M <sub>zd</sub>	N-m 7.1 6.9	
						Permitted load condition**	$\frac{F_y}{F_{yd}} + \frac{F_z}{F_{zd}} + \frac{M_x}{M_{xd}} + \frac{M_y}{M_{yd}} + \frac{M_z}{M_{zd}} \leq 1$ F <sub>y</sub> , F <sub>z</sub> , M <sub>x</sub> , M <sub>y</sub> , M <sub>z</sub> are working loads		



\*The load condition is based on 10,000km operation

\*\*If used on vertical axis or special condition, please contact HIWIN.